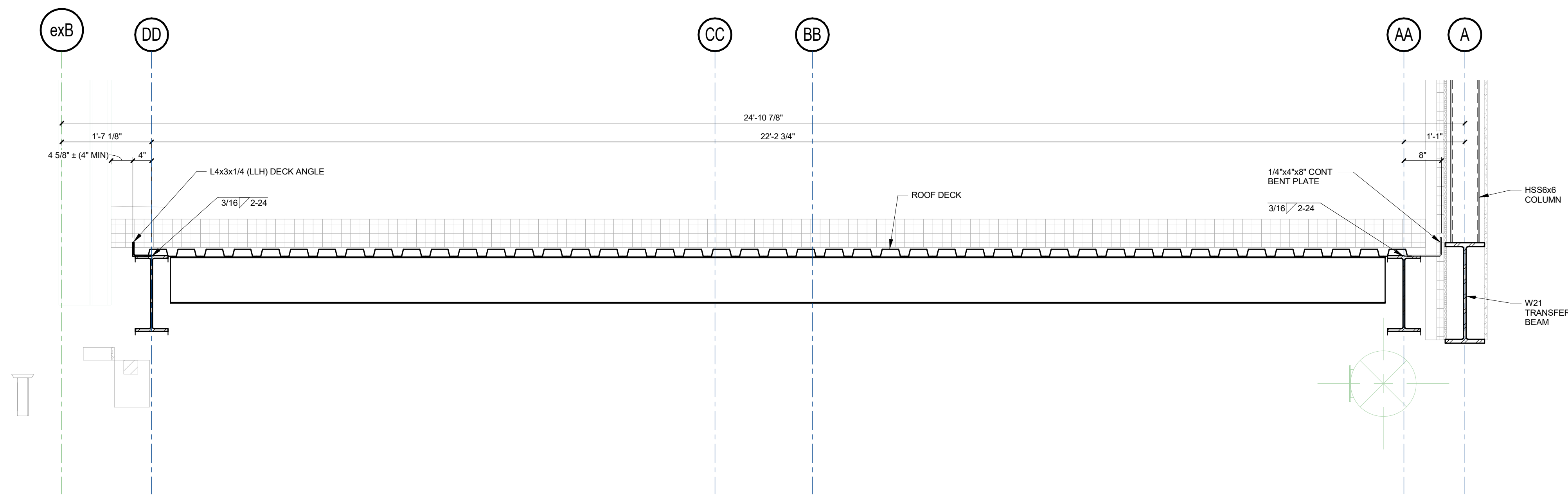
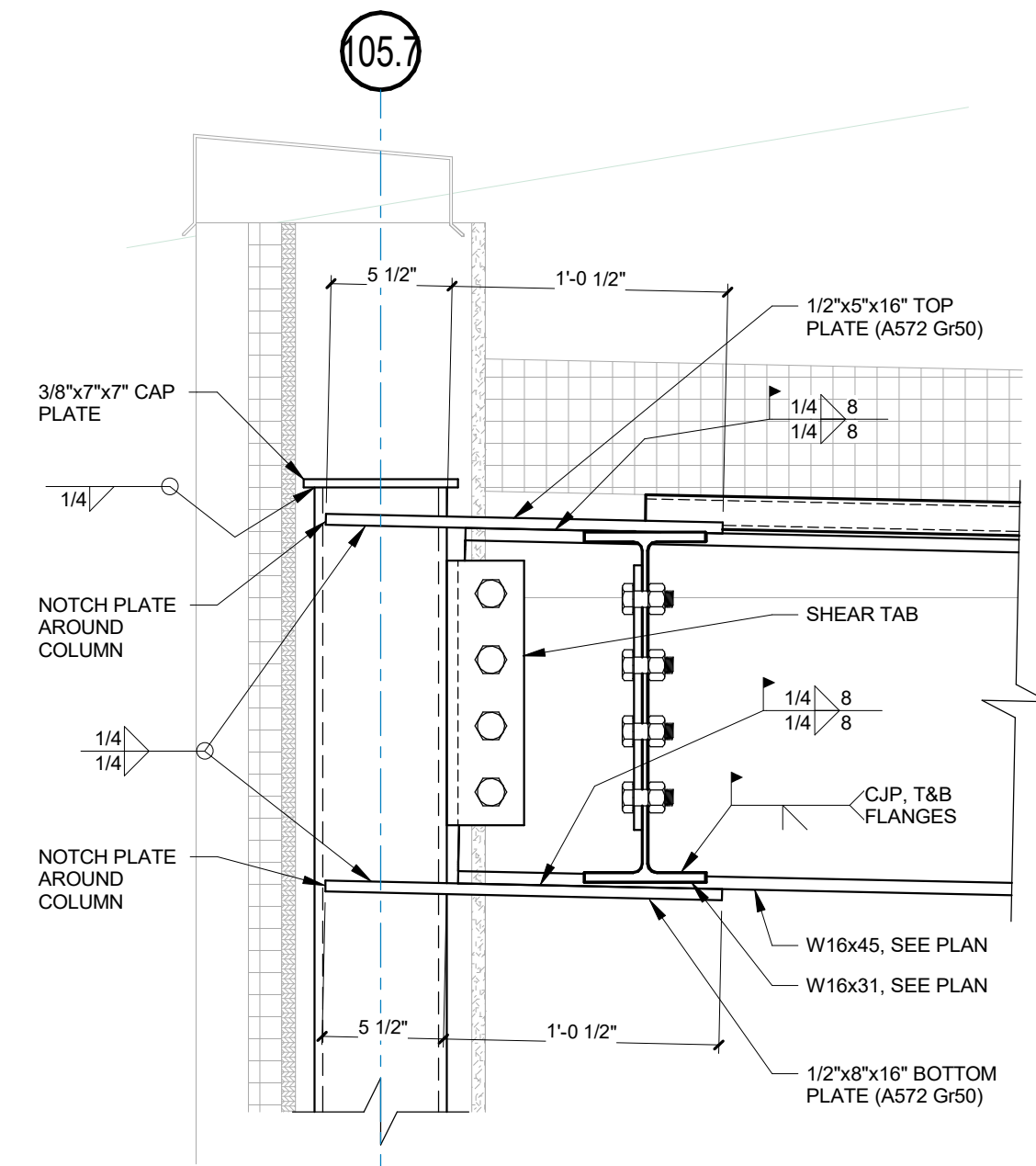


2 LOBBY LOW ROOF - EAST/WEST  
3/4" = 1'-0"



1 SECTION AT LOBBY LOW ROOF  
3/4" = 1'-0"

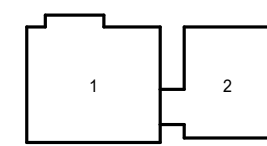


3 MOMENT CONNECTION DETAIL  
1 1/2" = 1'-0"

TowerPinkster  
Architecture - Engineering - Interiors

Risepointe  
architecture • design • interiors  
1001 W. MAIN ST. SUITE 100  
SEATTLE, WA 98101  
P 206.461.6337

PROPOSED SITE IMPROVEMENTS FOR  
TOWNE SOUTH CHURCH  
2224 PEARTREE RD.  
ELIZABETH CITY, NC 27909



KEY PLAN

ARCHITECTURE  
RISEPORTE  
CONTACT CHRIS STASSER  
200 N. HARRISON ST. UNIT 101  
ALHAMBRA, IL 60110  
P 630.590.8857  
WWW.RISEPORTE.COM

GENERAL CONTRACTOR  
AA CRESSION  
CONTACT CHRIS MORRIS  
134 E. RICH BLVD  
ELIZABETH CITY, NC 27909  
P 252.362.8171  
WWW.AACRESSION.COM

CIVIL ENGINEERING  
EASTERN CAROLINA CONSTRUCTION  
CONTACT REGAN ROBEY  
154 US HWY 108 E  
CAMDEN, NC 27805  
P 252.621.3570  
WWW.EASTERNCAROLINAENGINEERING.COM

STRUCTURAL  
TOWER PINKSTER  
CONTACT SALLY RAMLER  
4 FULTON ST. E. #200  
GRAND RAPIDS, MI 49503  
P 616.504.6255  
WWW.TOWERPINKSTER.COM

MECHANICAL  
TOWER PINKSTER  
CONTACT DENVER WESSELS  
4 FULTON ST. E. #200  
GRAND RAPIDS, MI 49503  
P 616.504.6255  
WWW.TOWERPINKSTER.COM

ELECTRICAL  
TOWER PINKSTER  
CONTACT CONNOR NICHOLSON  
4 FULTON ST. E. #200  
GRAND RAPIDS, MI 49503  
P 616.504.6255  
WWW.TOWERPINKSTER.COM

PLUMBING  
TOWER PINKSTER  
CONTACT DENVER WESSELS  
4 FULTON ST. E. #200  
GRAND RAPIDS, MI 49503  
P 616.504.6255  
WWW.TOWERPINKSTER.COM

AUDIO-VIDEO-LIGHTING-ACOUSTICS  
LIVESPACE  
CONTACT JIM HENRY  
4800 STARR ST SE  
GRAND RAPIDS, MI 49546  
P 616.504.6255  
WWW.LIVESPACE.COM

INFORMATION TECHNOLOGY  
INTULISE  
CONTACT CHRIS STIEB  
151 FORDSHIRE DR  
LANCASTER, PA 17601  
P 717.796.0282  
WWW.INTULISE.COM

NO.	DESCRIPTION	ISSUE DATE
A	ISSUED FOR PERMIT	2020.03.23
B	ISSUED FOR 95% CD	2020.04.30

NO.	DESCRIPTION	ISSUE DATE
A	ISSUED FOR PERMIT	2020.03.23
B	ISSUED FOR 95% CD	2020.04.30
C	ISSUED FOR 100% CD	2020.05.15
D	ISSUED FOR 100% CD	2020.06.01
E	ISSUED FOR 100% CD	2020.06.15
F	ISSUED FOR 100% CD	2020.06.30
G	ISSUED FOR 100% CD	2020.07.15
H	ISSUED FOR 100% CD	2020.07.30
I	ISSUED FOR 100% CD	2020.08.15
J	ISSUED FOR 100% CD	2020.08.30
K	ISSUED FOR 100% CD	2020.09.15
L	ISSUED FOR 100% CD	2020.09.30
M	ISSUED FOR 100% CD	2020.10.15
N	ISSUED FOR 100% CD	2020.10.30
O	ISSUED FOR 100% CD	2020.11.15
P	ISSUED FOR 100% CD	2020.11.30
Q	ISSUED FOR 100% CD	2020.12.15
R	ISSUED FOR 100% CD	2020.12.30
S	ISSUED FOR 100% CD	2021.01.15
T	ISSUED FOR 100% CD	2021.01.30
U	ISSUED FOR 100% CD	2021.02.15
V	ISSUED FOR 100% CD	2021.02.28
W	ISSUED FOR 100% CD	2021.03.15
X	ISSUED FOR 100% CD	2021.03.30
Y	ISSUED FOR 100% CD	2021.04.15
Z	ISSUED FOR 100% CD	2021.04.30

PROJECT NAME  
TOWNE SOUTH CHURCH  
2224 PEARTREE RD.  
ELIZABETH CITY, NC 27909

CURRENT ISSUE  
ISSUED FOR 95% CD  
2020.04.30

SHEET NAME  
FRAMING DETAILS

PROJECT NUMBER  
25-623

SCALE  
As indicated

DRAWING NUMBER  
S-402

4/20/2020 10:28:30 AM